



GLEND A S. TIMMER REVOCABLE TRUST - TRACT 1

AERIAL MAP



Center: 42.724118, -92.687533

1-91N-16W

Jefferson Township

Butler County, IA

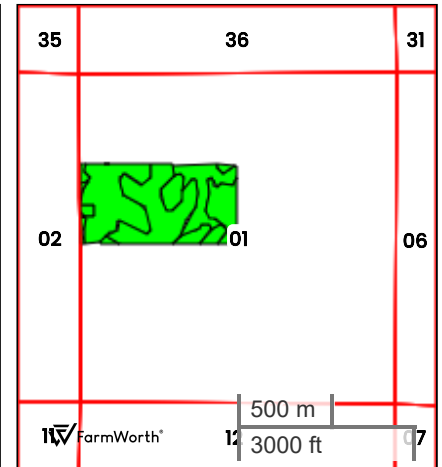
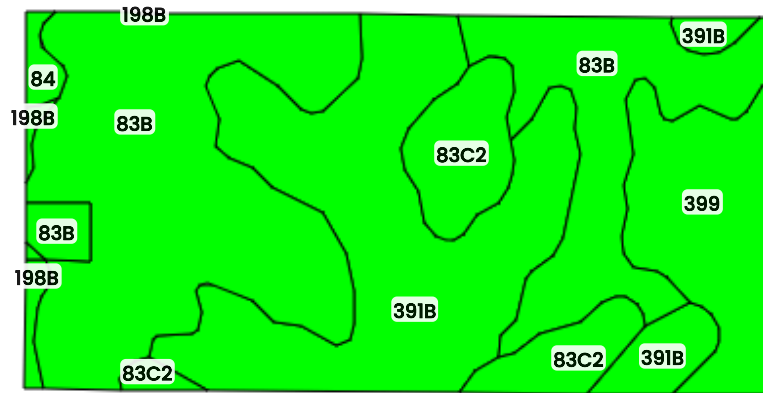


FarmWorth, LLC makes no representations or warranties, express or implied, as to the accuracy of any information, data, numerical values, boundaries, or any other information generated through the use of FarmWorth.com. User is solely responsible for independently investigating and determining all information provided through FarmWorth.com prior to use and waives any and all claims against FarmWorth, LLC for any inaccuracies or inconsistencies in the information and/or data.



GLEND A S. TIMMER REVOCABLE TRUST - TRACT 1

TOTAL SOILS



County: **Butler County, IA**
Location: **1-91N-16W**
Township: **Jefferson**
Acres: **79.29**
Date: **12/02/2025**



Field borders obtained from Farm Service Agency
as of 2008

FarmWorth, LLC makes no representations or
warranties, express or implied, as to the accuracy of
any information, data, numerical values, boundaries,
or any other information generated through the use of
FarmWorth.com. User is solely responsible for
independently investigating and determining all
information provided through FarmWorth.com prior to
use and waives any and all claims against FarmWorth,
LLC for any inaccuracies or inconsistencies in the
information and/or data.

Code	Description	Acres	% of field	IA CSR2	Soil Class (Non-Irr)	Drainage Class
83B	Kenyon loam, 2 to 5 percent slopes	36.13	45.57 %	90	2	Moderately well drained
391B	Clyde-Floyd complex, 1 to 4 percent slopes	25.12	31.68 %	87	2	Poorly drained
399	Readlyn silt loam, 1 to 3 percent slopes	9.38	11.83 %	91	1	Somewhat poorly drained
83C2	Kenyon loam, 5 to 9 percent slopes, eroded	7.04	8.88 %	84	3	Moderately well drained
198B	Floyd loam, 1 to 4 percent slopes	0.92	1.16 %	89	2	Somewhat poorly drained
84	Clyde silty clay loam, 0 to 3 percent slopes	0.70	0.88 %	88	2	Poorly drained
Average:				88.6		

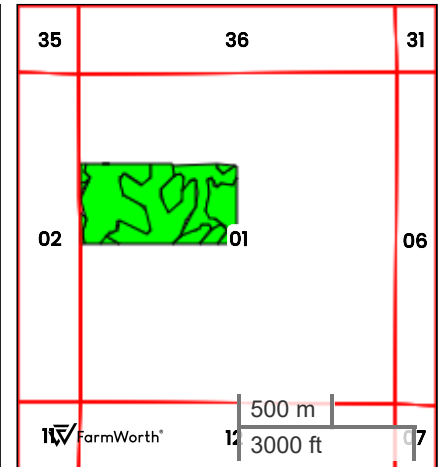
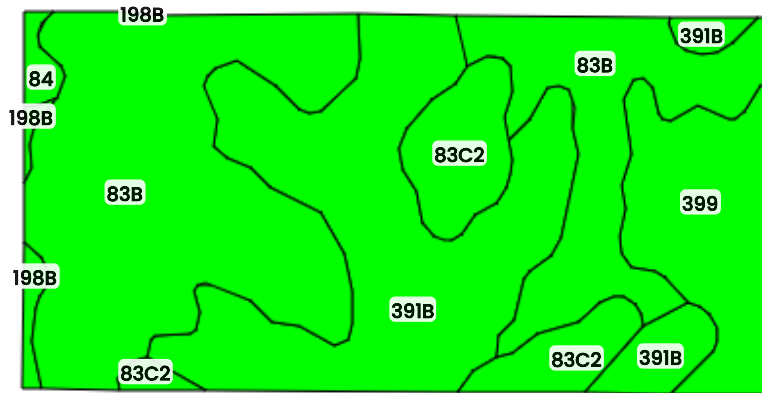
IA has updated the CSR values for each county to CSR2.

Soils data provided by USDA and NRCS.



GLEND A S. TIMMER REVOCABLE TRUST - TRACT 1

TILLABLE SOILS



County: **Butler County, IA**
Location: **1-91N-16W**
Township: **Jefferson**
Acres: **79.29**
Date: **12/02/2025**



Field borders obtained from Farm Service Agency as of 2008

FarmWorth, LLC makes no representations or warranties, express or implied, as to the accuracy of any information, data, numerical values, boundaries, or any other information generated through the use of FarmWorth.com. User is solely responsible for independently investigating and determining all information provided through FarmWorth.com prior to use and waives any and all claims against FarmWorth, LLC for any inaccuracies or inconsistencies in the information and/or data.

Code	Description	Acres	% of field	IA CSR2	Soil Class (Non-Irr)	Drainage Class
83B	Kenyon loam, 2 to 5 percent slopes	36.14	45.58 %	90	2	Moderately well drained
391B	Clyde-Floyd complex, 1 to 4 percent slopes	25.12	31.68 %	87	2	Poorly drained
399	Readlyn silt loam, 1 to 3 percent slopes	9.38	11.83 %	91	1	Somewhat poorly drained
83C2	Kenyon loam, 5 to 9 percent slopes, eroded	7.03	8.87 %	84	3	Moderately well drained
198B	Floyd loam, 1 to 4 percent slopes	0.91	1.15 %	89	2	Somewhat poorly drained
84	Clyde silty clay loam, 0 to 3 percent slopes	0.71	0.90 %	88	2	Poorly drained
Average:				88.6		

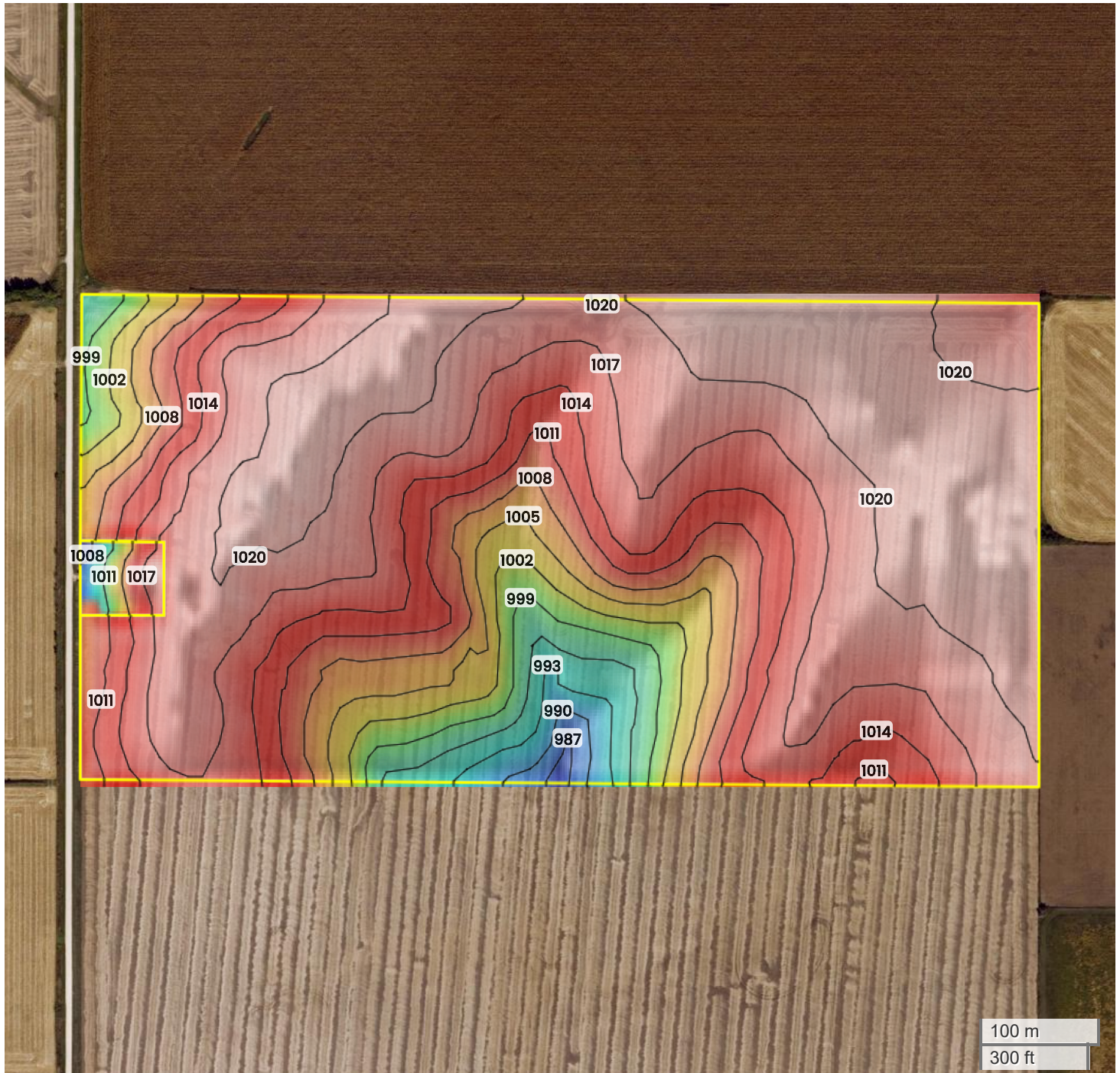
IA has updated the CSR values for each county to CSR2.

Soils data provided by USDA and NRCS.



GLEND A S. TIMMER REVOCABLE TRUST - TRACT 1

TOPOGRAPHY



987 ft

1020 ft



Center: 42.724114, -92.687534

1-91N-16W

Jefferson Township

Butler County, IA

Source: USGS 10m DEM

Interval(ft): 3

Max: 1020.0 ft

Min: 987.0 ft

Range: 33.0 ft

Average: 1003.5 ft



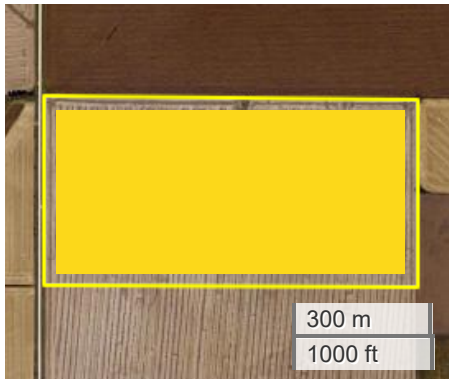
FarmWorth, LLC makes no representations or warranties, express or implied, as to the accuracy of any information, data, numerical values, boundaries, or any other information generated through the use of FarmWorth.com. User is solely responsible for independently investigating and determining all information provided through FarmWorth.com prior to use and waives any and all claims against FarmWorth, LLC for any inaccuracies or inconsistencies in the information and/or data.



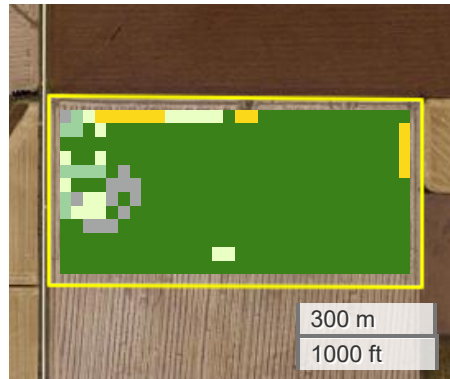
GLENDIA S. TIMMER REVOCABLE TRUST - TRACT 1

CROP HISTORY

2024



2023



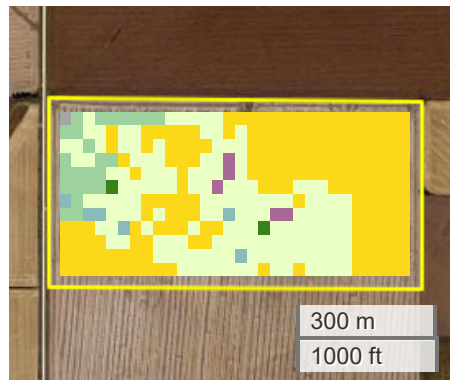
2022



2021



2020



2019



Crop History

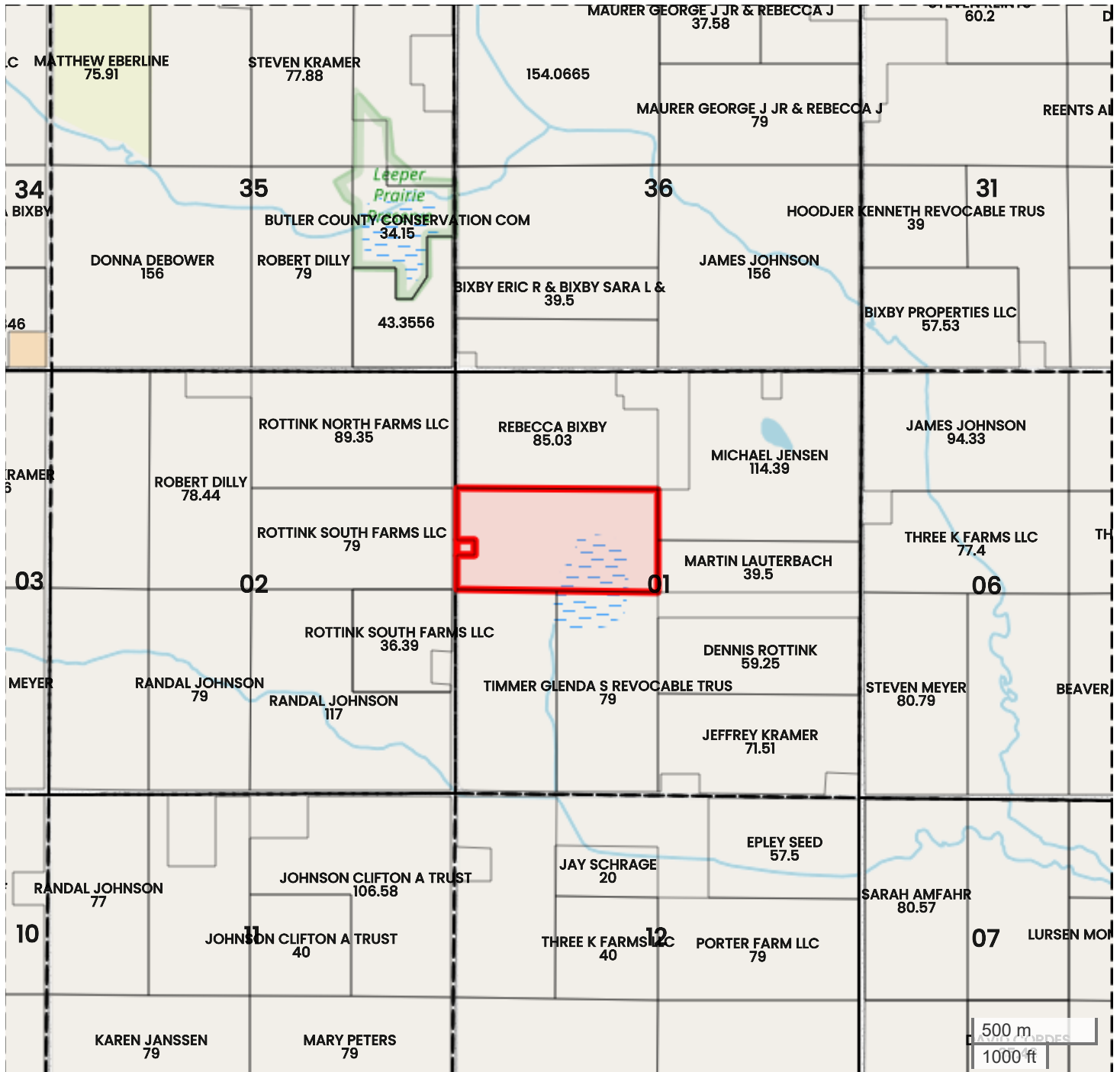
		Percent Area (>0.5 %)						
	Crop	2024	2023	2022	2021	2020	2019	Average
	Corn	100.0	3.3	82.8	77.2	49.7	8.6	53.6
	Soybeans	0.0	86.1	6.1	1.4	0.6	35.0	25.8
	Grass/Pasture	0.0	4.7	5.0	15.3	39.7	43.9	21.7
	Deciduous Forest	0.0	2.2	3.3	2.5	5.3	6.1	3.9
	Herbaceous Wetlands	0.0	0.0	0.0	0.0	1.4	2.8	2.1
	Oats	0.0	0.0	0.0	0.0	1.4	0.0	1.4
	Developed/Low Intensity	0.0	1.4	0.8	1.4	0.0	0.0	1.2
	Mixed Forest	0.0	0.3	0.0	0.0	1.4	1.9	1.2



FarmWorth, LLC makes no representations or warranties, express or implied, as to the accuracy of any information, data, numerical values, boundaries, or any other information generated through the use of FarmWorth.com. User is solely responsible for independently investigating and determining all information provided through FarmWorth.com prior to use and waives any and all claims against FarmWorth, LLC for any inaccuracies or inconsistencies in the information and/or data.



GLEND A S. TIMMER REVOCABLE TRUST - TRACT 1 PLAT MAP



Center: 42.724101, -92.687501

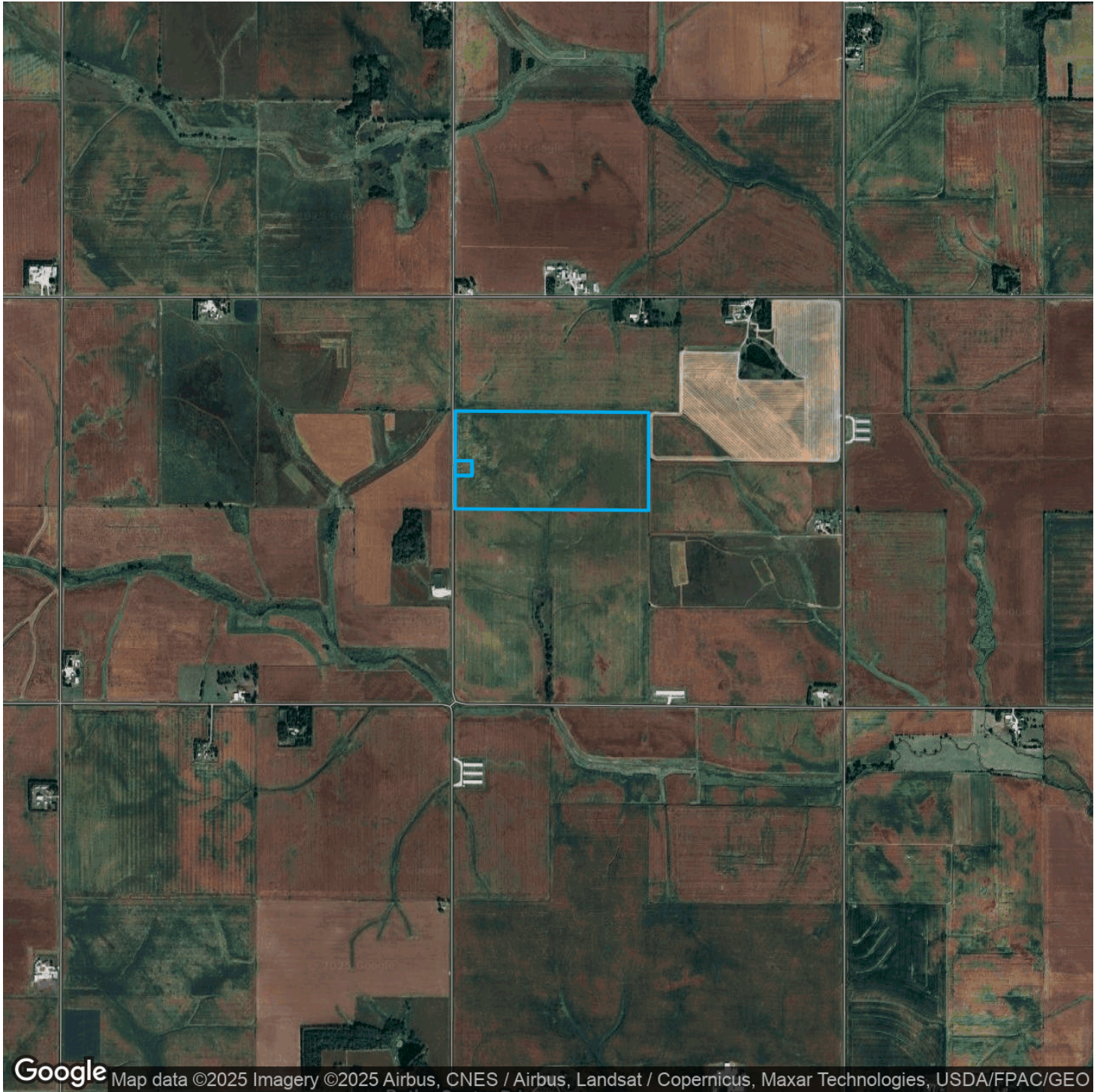
1-91N-16W
Jefferson Township
Butler County, IA




FarmWorth, LLC makes no representations or warranties, express or implied, as to the accuracy of any information, data, numerical values, boundaries, or any other information generated through the use of FarmWorth.com. User is solely responsible for independently investigating and determining all information provided through FarmWorth.com prior to use and waives any and all claims against FarmWorth, LLC for any inaccuracies or inconsistencies in the information and/or data.



GLEND A S. TIMMER REVOCABLE TRUST - TRACT 1
PROXIMITY MAP



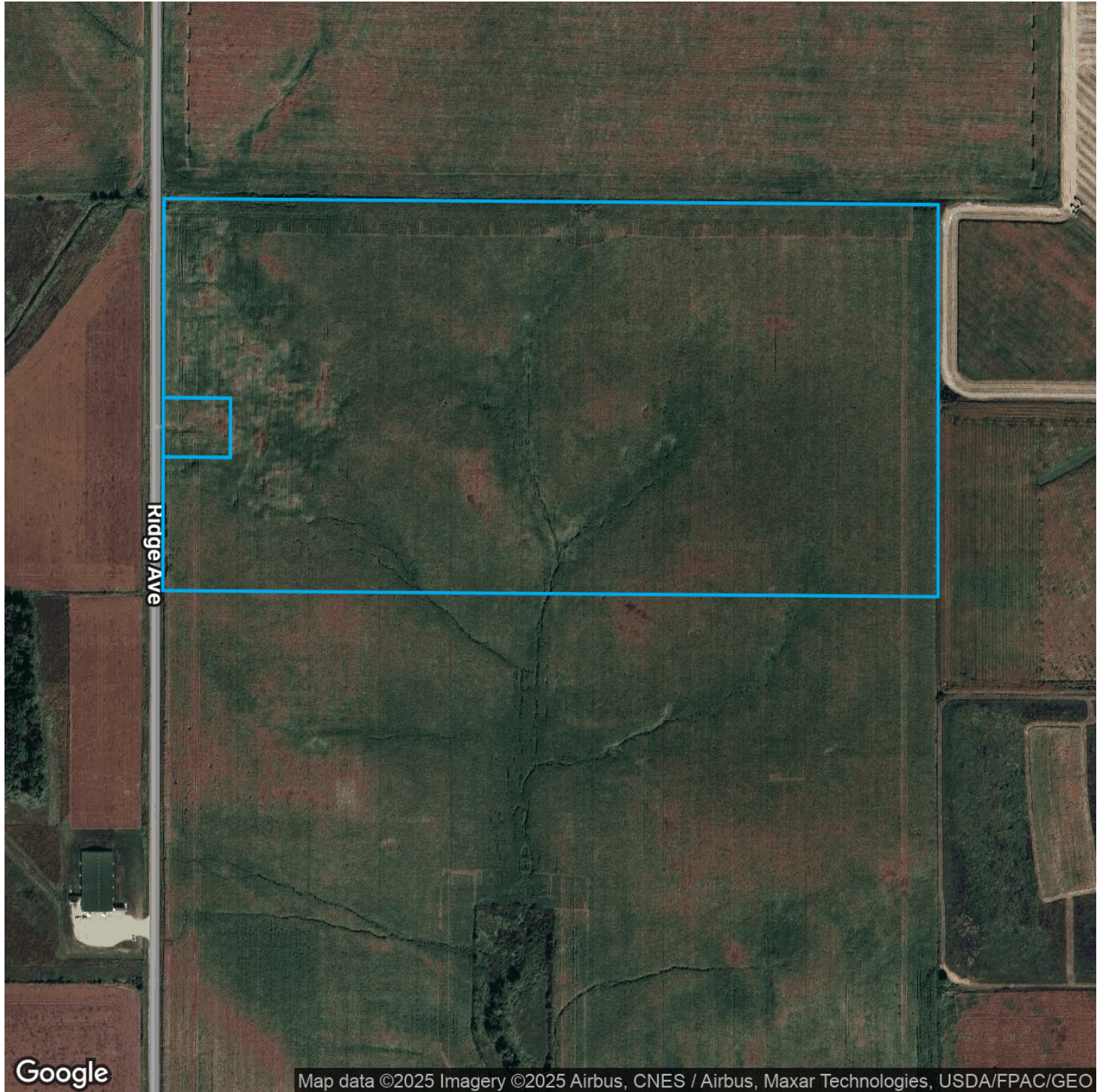
Google Map data ©2025 Imagery ©2025 Airbus, CNES / Airbus, Landsat / Copernicus, Maxar Technologies, USDA/FPAC/GEO

 FarmWorth[®] FarmWorth, LLC makes no representations or warranties, express or implied, as to the accuracy of any information, data, numerical values, boundaries, or any other information generated through the use of FarmWorth.com. User is solely responsible for independently investigating and determining all information provided through FarmWorth.com prior to use and waives any and all claims against FarmWorth, LLC for any inaccuracies or inconsistencies in the information and/or data.

 [Get Driving Directions](#)



GLEND A S. TIMMER REVOCABLE TRUST - TRACT 1
REGIONAL MAP



FarmWorth, LLC makes no representations or warranties, express or implied, as to the accuracy of any information, data, numerical values, boundaries, or any other information generated through the use of FarmWorth.com. User is solely responsible for independently investigating and determining all information provided through FarmWorth.com prior to use and waives any and all claims against FarmWorth, LLC for any inaccuracies or inconsistencies in the information and/or data.

 [Get Driving Directions](#)



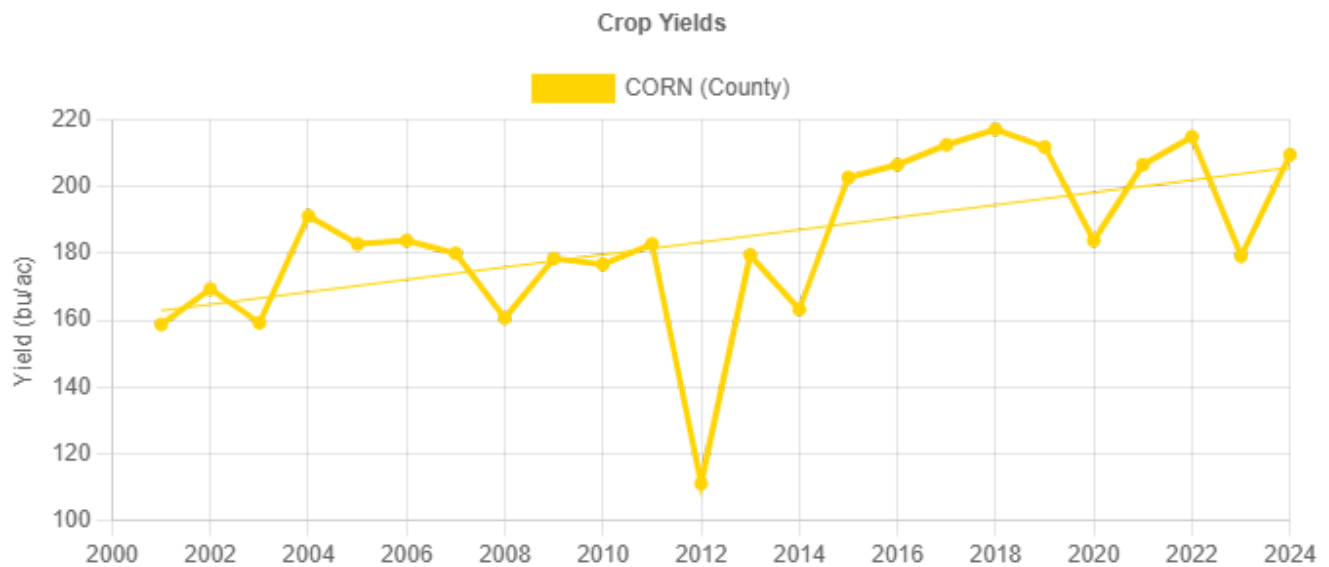
FARMLAND INSIGHTS

Farmland Statistics for Butler County, IA for 2023

	Attribute	Year	Value
IA Average	Farmland Value (\$/ac)	2023	\$9,410
	Cash Rent (\$/ac)	2023	\$269
	Farmland Returns (%)	2023	9.05%
Butler County Average	Price (\$/ac)	2023	\$9,221
	National Productivity Index (NCCPI3 All Crops)	2023	79
	CSR2	2023	72

RMA Statistics for Butler County, IA for 2022

Top Crops	Year	Expected Yield (bu/ac)	APA Trend Adjustment (bu/year)
Corn	2022	206.2	2.38



FarmWorth, LLC makes no representations or warranties, express or implied, as to the accuracy of any information, data, numerical values, boundaries, or any other information generated through the use of FarmWorth.com. User is solely responsible for independently investigating and determining all information provided through FarmWorth.com prior to use and waives any and all claims against FarmWorth, LLC for any inaccuracies or inconsistencies in the information and/or data.